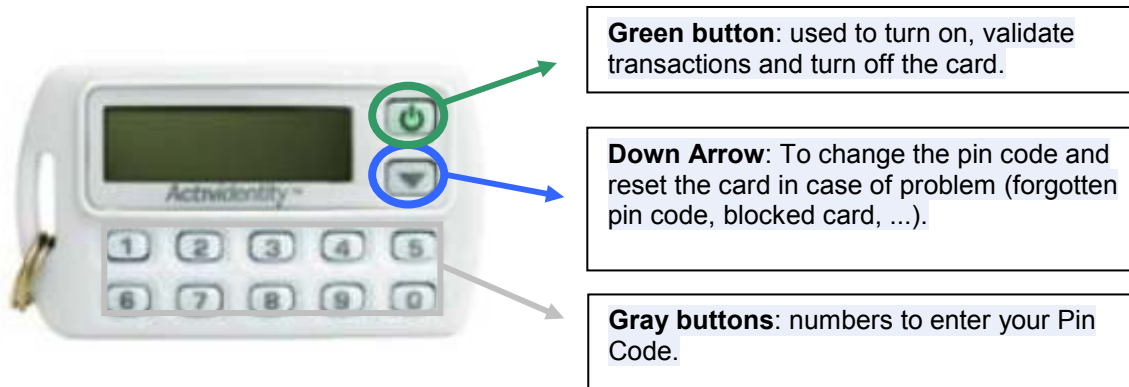


Instructions for using your ActivCard.



Principle of use:

Turn the card on by pressing the green button.

Enter your Pin Code.

During the ^{1st} use, a new Pin Code is requested. Please directly enter a new Pin Code and confirm (by pressing the green button).

The screen displays a simple cursor "_".

Then press the green button to get the code (8 digits) as your password in your applications.

The card automatically switches off after one minute but you can turn it off pressing the green button.

Change Pin Code:

Turn the card on by pressing the green button.

Enter your old pin code.

The screen displays a simple cursor "_".

Then press the green button to get the 8 digits generated code.

Press the button with the down arrow once to get the word "CHANGE PIN".

Press the green button (marked "NEW PIN" is displayed).

Enter your new pin code and press the green button. "CONFIRM" is now displayed on the screen. Please note the new Pin Code may not be the same as the old, or 1234 or even 4 times the same number. If this is the case, the screen will display "ERROR" and you must start over.

Re-enter your new pin code and validate it by pressing the green button. "COMPLETE" is now displayed on the screen of the card).

Your Pin code is now changed.

The card automatically switches off after one minute but you can turn it off using the green button.

TAILORED SOLUTIONS

S, ZONE D'ACTIVITÉS BOURMIGHT
L-8070 BERTRANGE
LUXEMBOURG
T. : +352 49 46 71-1
F. : +352 49 69 29
E.: INFO@ARIANESOFT.COM

Unlock the card:

After 3 consecutive incorrect entries of your Pin Code, the card is blocked and the word "LOCKED" is displayed on the card screen. In this case please contact ArianeSoft to remotely unlock the card and put a new pin code.

Call ArianeSoft Support and tell them your login associated with the card or the serial number on the back of the card (S / N: ...).

Turn the card on by pressing the green button.

The card shows "LOCKED". Press again the green button and give the 8-digit code you will give to ArianeSoft.

ArianeSoft then gives you back another 8-digit code that you enter after pressing the green button.

Validate the code again in possession of the green button, "COMPLETE" appears in the display.

Then push the green button to see the indication "NEW PIN" on the card screen.

Now make the same manner as for a change of Pin Code.